

# American Standard

# HAMPTON

## THREE-HANDLE BATH/SHOWER FITTING



7225.703 Shown

### MODEL NUMBER:

- 7225.703 Bath/Shower Fitting**  
I.P.S. Tub Spout. Porcelain Cross handles.
- 7225.713 Bath/Shower Fitting**  
I.P.S. Tub Spout. Porcelain Lever handles.
- 7225.723 Bath/Shower Fitting**  
I.P.S. Tub Spout. Metal Cross handles.
- 7225.733 Bath/Shower Fitting**  
I.P.S. Tub Spout. Metal Lever handles.



### GENERAL DESCRIPTION:

Cast brass valve body on 8 inch centers. 1/4 turn washerless ceramic disc valve cartridges - reversible for use with either lever or cross handles. 1/2" NPT female threaded inlets and outlets. Adjustable brass showerhead with 2.5gpm/9.5L/min. flow restrictor. Third handle provides positive diverting action between showerhead and tub spout.

### PRODUCT FEATURES:

**Brass Construction:** Durable - Ideal for prolonged contact with water. Provides the finest surface for application of all finishes.

**Ceramic Disc Valve Cartridges:** Assures a lifetime of drip-free performance.

**Increased roughing-in:** 42mm to 86mm (1-5/8 to 3-3/8).

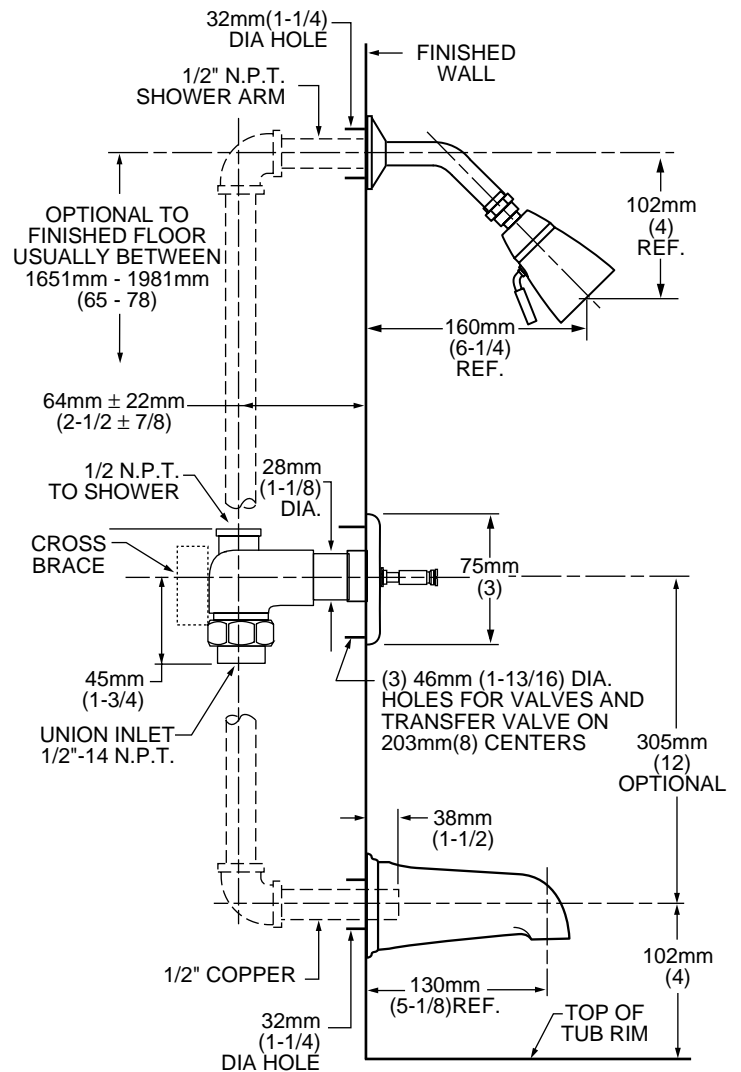
**Exclusive Valve Escutcheon Design:** 3 piece escutcheon design accommodates deep and shallow rough-ins. Provides water tight seal around valves.

**Integral Unions:** No soldering required.

**Exclusive Handle Alignment System:** Allows fine tuning of handle position.

**Choice of Finishes:** Wide range of durable finishes.

**Exclusive Plaster Guard:** Plaster guard can be used to test for leaks prior to handle installation.



### SUGGESTED SPECIFICATION:

Three handle bath/shower fitting shall feature cast brass construction. Shall also feature 1/4 turn washerless ceramic disc valve cartridges that are reversible for use with cross or lever handles. Fitting shall be American Standard Model # 7225.\_\_\_\_.\_\_\_\_.

